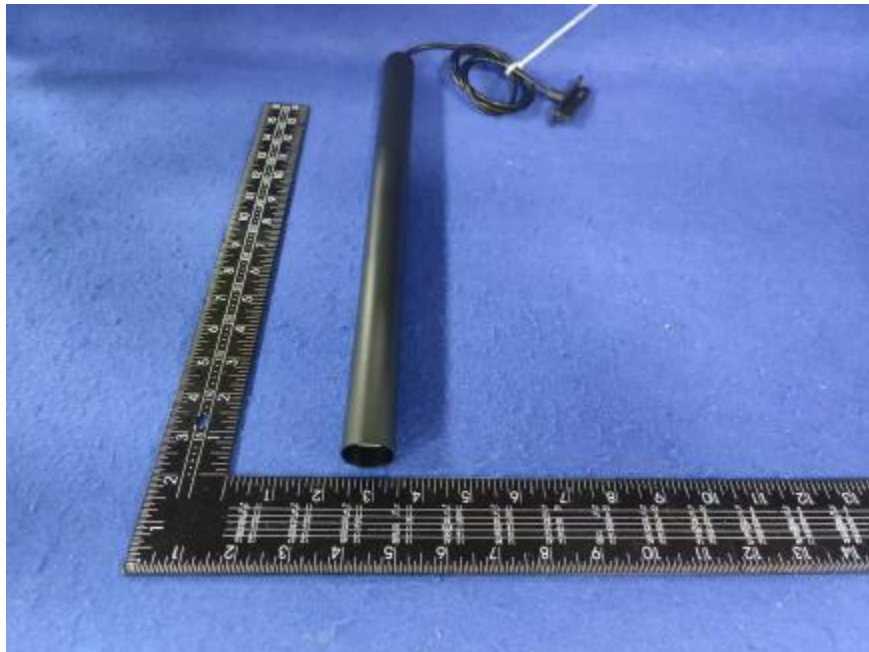


Luminaire Photograph



Light Output Ratio:	83.8%	
Luminaire Power:	6.436 W	
SHR Nominal:	0.00	Calculated using the TM5
SHR Maximum:	0.30	fine grid method.

C Range: 0 - 360DEG
C Interval: 30.0DEG
Test Speed: HIGH
Temperature: 25.3 °C
Operators: zoe
Test Date: 2024-12-18

Range: 0 - 180DEG
Interval: 1.0DEG
Test System: EVERFINE GO-SPEX500_V1 SYSTEM V2.00.461
Humidity: 65.0%
Test Distance: 3.160m [K=1.0000]
Remarks: LAMP: BXRH-30G60T0-C-83 Ra:90
LENS: PM-1117 15R
NOT DRIVER: DC 48V
30minutes warm-up

LUMINOUS INTENSITY DISTRIBUTION DIAGRAM

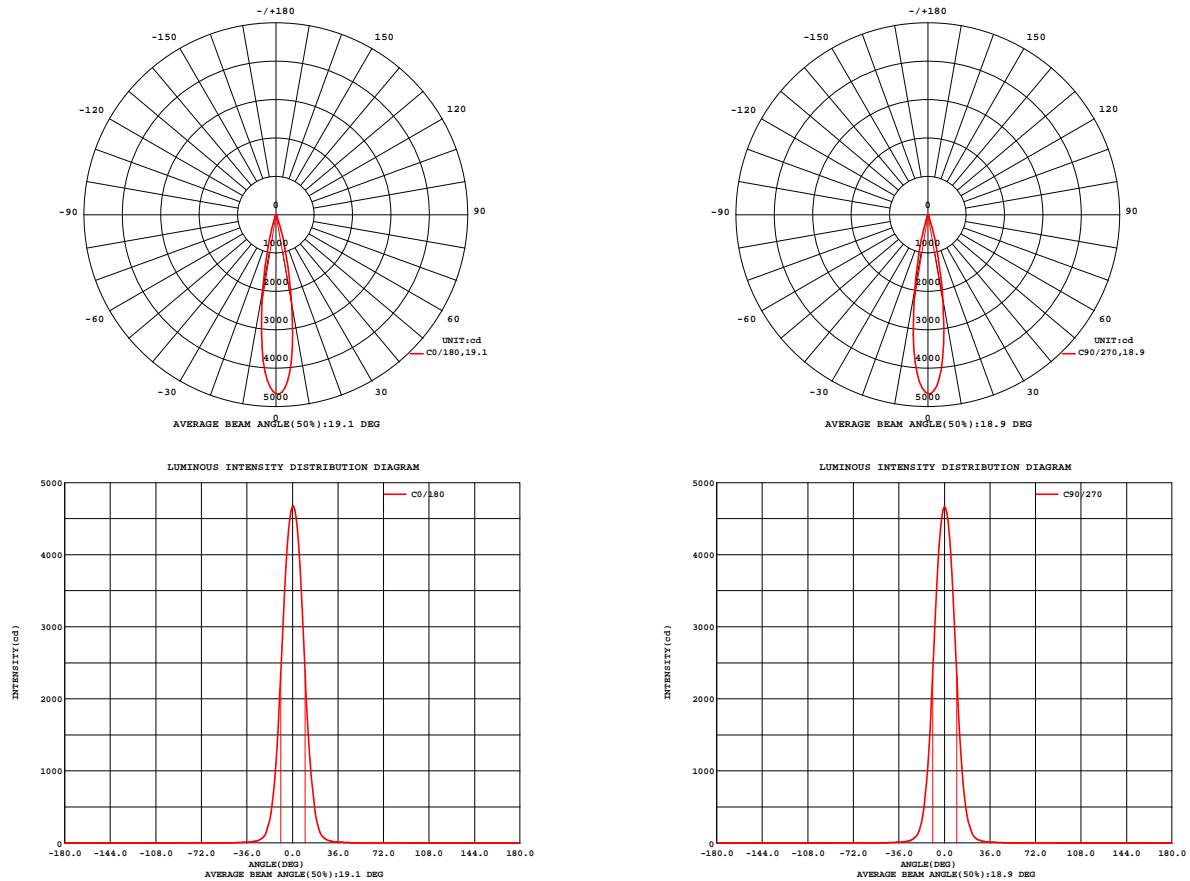


Fig. C0/C180

Fig. C90/C270

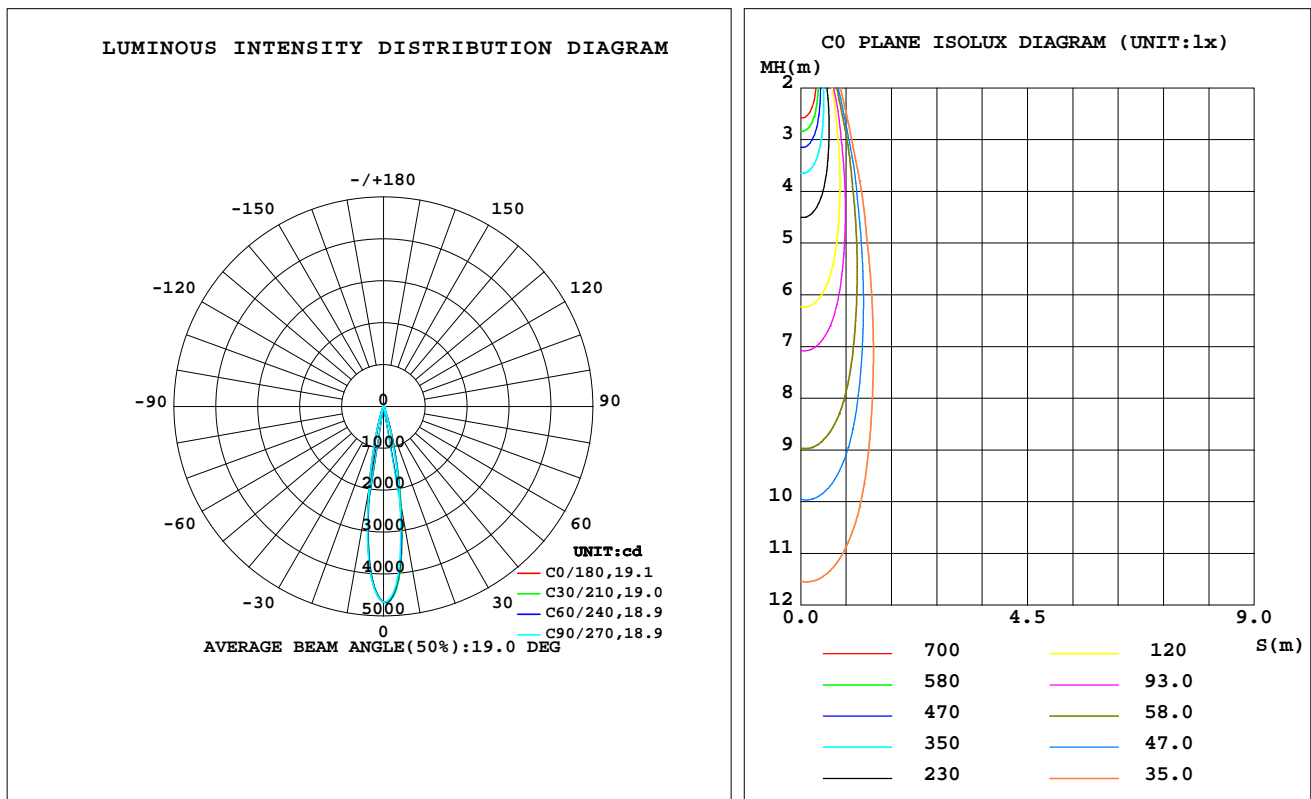
C Range: 0 - 360DEG
C Interval: 30.0DEG
Test Speed: HIGH
Temperature: 25.3 °C
Operators: zoe
Test Date: 2024-12-18

Range: 0 - 180DEG
Interval: 1.0DEG
Test System: EVERFINE GO-SPEX500_V1 SYSTEM V2.00.461
Humidity: 65.0%
Test Distance: 3.160m [K=1.0000]
Remarks: LAMP: BXRH-30G60T0-C-83 Ra: 90
LENS: PM-1117 15R
NOT DRIVER: DC 48V
30minutes warm-up

LUMINAIRE PHOTOMETRIC TEST REPORT

Test:U:47.997V I:0.1341A P:6.4364W PF:1.0000 Freq:49.99Hz Lamp Flux:712.09x1 lm		
NAME: OZ48-CT-28	TYPE:	WEIGHT:
SPEC.: 3000K	DIM.:	SERIAL No.: 2412181472
MFR.: RISE	SUR.: 0.000346185m2	Shielding Angle:

DATA OF LAMP		PHOTOMETRIC DATA Eff: 92.66 lm/W			
MODEL	Bridgelux	I _{max} (cd)	4683	S/MH(C0/180)	0.31
NOMINAL POWER(W)	6	LOR(%)	83.8	S/MH(C90/270)	0.31
RATED VOLTAGE(V)	48	TOTAL FLUX(lm)	596.40	UP,DN(C0-180)	0.0,43.9
NOMINAL FLUX(lm)	712.09	CIE CLASS	DIRECT	UP,DN(C180-360)	0.0,39.8
LAMPS INSIDE	1	up(%)	0.0	CIBSE SHR NOM	0.00
TEST VOLTAGE(V)	48	down(%)	83.8	CIBSE SHR MAX	0.30



C Range: 0 - 360DEG
C Interval: 30.0DEG
Test Speed: HIGH
Temperature:25.3℃
Operators:zoe
Test Date:2024-12-18

Range: 0 - 180DEG
Interval: 1.0DEG
Test System:EVERFINE GO-SPEX500_V1 SYSTEM V2.00.461
Humidity:65.0%
Test Distance:3.160m [K=1.0000]
Remarks: LAMP:BXRH-30G60T0-C-83 Ra:90
LENS:PM-1117 15R
NOT DRIVER:DC 48V
30minutes warm-up

ZONAL FLUX DIAGRAM

ZONAL FLUX DIAGRAM:

	C0	C45	C90	C135	C180	C225	C270	C315		zone	total	%lum,lamp
10	2378	2374	2266	2080	2022	1938	2006	2261	0- 10	316.8	316.8	53.1,44.5
20	253.3	261.7	240.6	201.2	191.2	159.1	167.5	220.5	10- 20	232.1	548.9	92,77.1
30	27.09	27.61	25.81	23.24	22.28	21.39	20.74	23.33	20- 30	33.23	582.2	97.6,81.8
40	9.487	9.811	9.468	9.072	8.490	7.791	7.980	8.534	30- 40	8.720	590.9	99.1,83
50	2.582	2.685	2.649	2.574	2.399	2.395	2.520	2.578	40- 50	3.827	594.7	99.7,83.5
60	0.7169	0.7865	0.8152	0.8028	0.6497	0.6305	0.6646	0.6801	50- 60	1.439	596.1	100,83.7
70	0.0556	0.0512	0.0479	0.0474	0.0511	0.0491	0.0523	0.0480	60- 70	0.2167	596.4	100,83.7
80	0.0223	0.0112	0.0189	0.0118	0.0199	0.0119	0.0217	0.0109	70- 80	0.0274	596.4	100,83.8
90	0	0	0	0	0	0	0	0	80- 90	0.0125	596.4	100,83.8
100	0	0	0	0	0	0	0	0	90-100	0	596.4	100,83.8
110	0	0	0	0	0	0	0	0	100-110	0	596.4	100,83.8
120	0	0	0	0	0	0	0	0	110-120	0	596.4	100,83.8
130	0	0	0	0	0	0	0	0	120-130	0	596.4	100,83.8
140	0	0	0	0	0	0	0	0	130-140	0	596.4	100,83.8
150	0	0	0	0	0	0	0	0	140-150	0	596.4	100,83.8
160	0	0	0	0	0	0	0	0	150-160	0	596.4	100,83.8
170	0	0	0	0	0	0	0	0	160-170	0	596.4	100,83.8
180	0	0	0	0	0	0	0	0	170-180	0	596.4	100,83.8
DEG	LUMINOUS INTENSITY:cd									UNIT:lm		

C Range: 0 - 360DEG
C Interval: 30.0DEG
Test Speed: HIGH
Temperature:25.3℃
Operators:zoe
Test Date:2024-12-18

Range: 0 - 180DEG
Interval: 1.0DEG
Test System:EVERFINE GO-SPEX500_V1 SYSTEM V2.00.461
Humidity:65.0%
Test Distance:3.160m [K=1.0000]
Remarks: LAMP:BXRH-30G60T0-C-83 Ra:90
LENS:PM-1117 15R
NOT DRIVER:DC 48V
30minutes warm-up

LUMINANCE LIMITATION CURVES

Test:U:47.997V I:0.1341A P:6.4364W PF:1.0000 Freq:49.99Hz
Lamp Flux:712.09x1 lm

NAME: OZ48-CT-28

TYPE:

WEIGHT:

SPEC.: 3000K

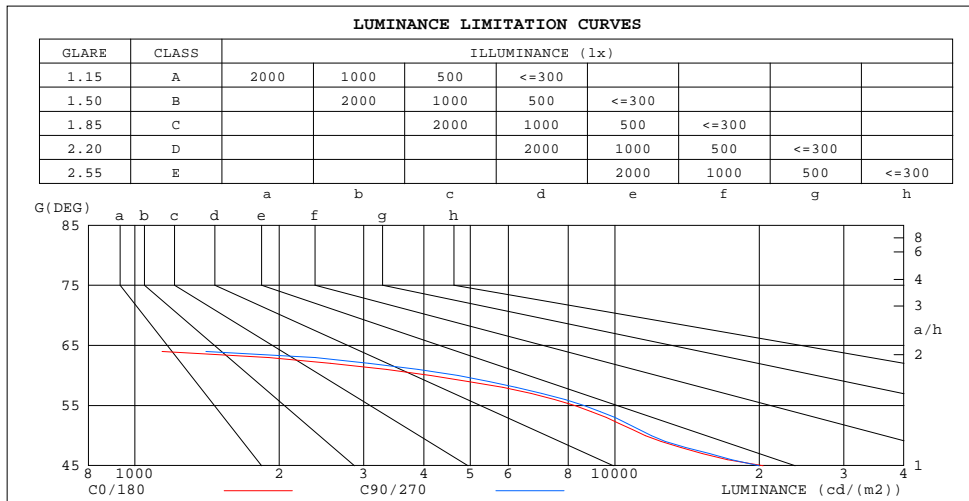
DIM.:

SERIAL No.: 2412181472

MFR.: RISE

SUR.: 0.000346185m2

Shielding Angle:



LUMINANCE cd/(m2)		
G(180)	C0/180	C90/270
85	658	586
80	371	314
75	340	259
70	469	405
65	776	756
60	4136	4714
55	8259	8641
50	11585	11914
45	20357	19956

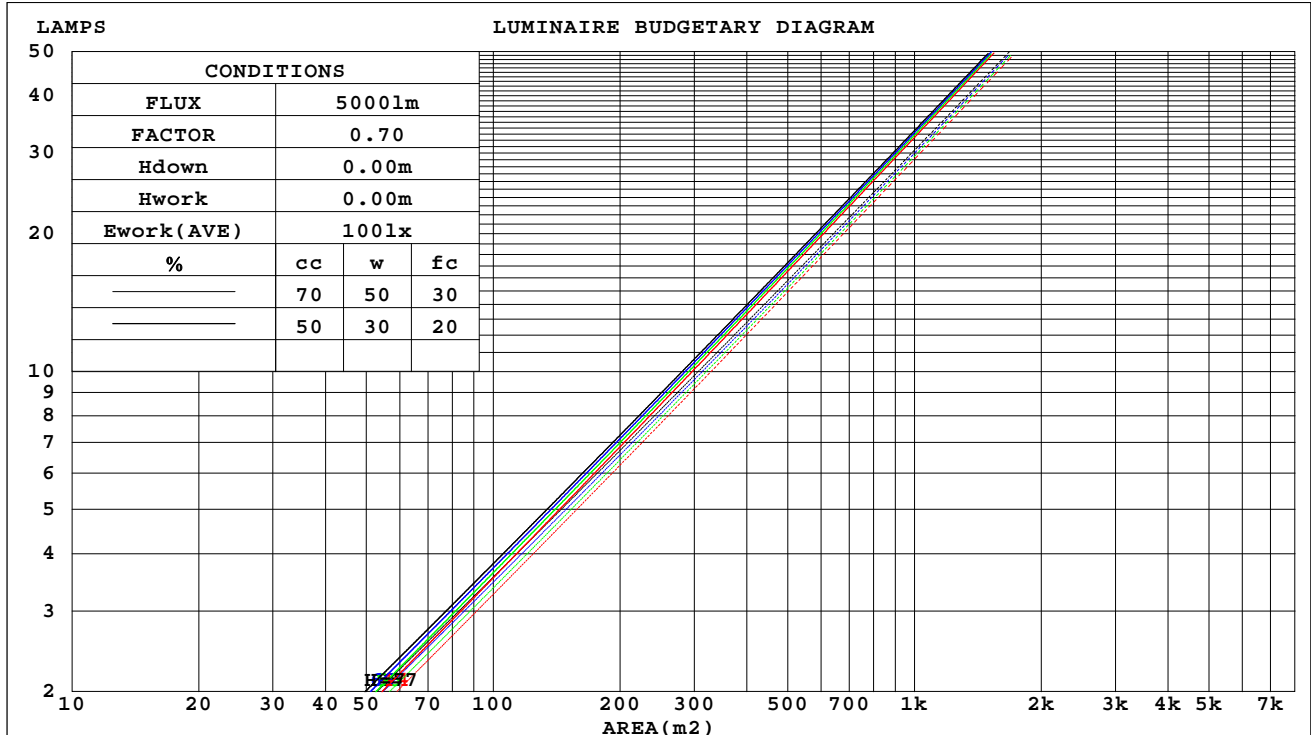
C Range: 0 - 360DEG
C Interval: 30.0DEG
Test Speed: HIGH
Temperature:25.3℃
Operators:zoe
Test Date:2024-12-18

Range: 0 - 180DEG
Interval: 1.0DEG
Test System:EVERFINE GO-SPEX500_V1 SYSTEM V2.00.461
Humidity:65.0%
Test Distance:3.160m [K=1.0000]
Remarks: LAMP:BXRH-30G60T0-C-83 Ra:90
LENS:PM-1117 15R
NOT DRIVER:DC 48V
30minutes warm-up

CU AND LUMINAIRE BUDGETARY ESTIMATE DIAGRAM

Test:U:47.997V I:0.1341A P:6.4364W PF:1.0000 Freq:49.99Hz Lamp Flux:712.09x1 lm		
NAME: OZ48-CT-28	TYPE:	WEIGHT:
SPEC.: 3000K	DIM.:	SERIAL No.: 2412181472
MFR.: RISE	SUR.: 0.000346185m2	Shielding Angle:

cc	80%			70%			50%			30%			10%			0
w	50%	30%	10%	50%	30%	10%	50%	30%	10%	50%	30%	10%	50%	30%	10%	0
fc	20%			20%			20%			20%			20%			0
RCR	RCR:Room Cavity Ratio			Coefficients of Utilization(CU)												
0.0	.00	.00	.00	.97	.97	.97	.93	.93	.93	.89	.89	.89	.85	.85	.85	.84
1.0	.95	.94	.93	.93	.92	.91	.90	.89	.88	.87	.86	.86	.84	.84	.83	.82
2.0	.92	.89	.88	.90	.88	.87	.88	.86	.85	.85	.84	.83	.83	.82	.81	.80
3.0	.88	.86	.84	.87	.85	.83	.85	.83	.82	.83	.82	.81	.82	.81	.79	.78
4.0	.86	.83	.81	.85	.82	.80	.83	.81	.79	.82	.80	.79	.80	.79	.78	.77
5.0	.83	.81	.78	.83	.80	.78	.81	.79	.77	.80	.78	.77	.79	.77	.76	.75
6.0	.81	.78	.76	.81	.78	.76	.80	.77	.76	.79	.77	.75	.78	.76	.75	.74
7.0	.79	.77	.75	.79	.76	.74	.78	.76	.74	.77	.75	.74	.77	.75	.73	.73
8.0	.78	.75	.73	.77	.75	.73	.77	.74	.73	.76	.74	.72	.75	.73	.72	.71
9.0	.76	.73	.72	.76	.73	.71	.75	.73	.71	.75	.73	.71	.74	.72	.71	.70
10.0	.75	.72	.70	.74	.72	.70	.74	.72	.70	.73	.71	.70	.73	.71	.70	.69



C Range: 0 - 360DEG
C Interval: 30.0DEG
Test Speed: HIGH
Temperature:25.3℃
Operators:zoe
Test Date:2024-12-18

Range: 0 - 180DEG
Interval: 1.0DEG
Test System:EVERFINE GO-SPEX500_V1 SYSTEM V2.00.461
Humidity:65.0%
Test Distance:3.160m [K=1.0000]
Remarks: LAMP:BXRH-30G60T0-C-83 Ra:90
LENS:PM-1117 15R
NOT DRIVER:DC 48V
30minutes warm-up

WEC AND CCEC

Test:U:47.997V I:0.1341A P:6.4364W PF:1.0000 Freq:49.99Hz Lamp Flux:712.09x1 lm		
NAME: OZ48-CT-28	TYPE:	WEIGHT:
SPEC.: 3000K	DIM.:	SERIAL No.: 2412181472
MFR.: RISE	SUR.: 0.000346185m2	Shielding Angle:

cc	80%			70%			50%			30%			10%			0	
w	50%	30%	10%	50%	30%	10%	50%	30%	10%	50%	30%	10%	50%	30%	10%	0	
fc	20%			20%			20%			20%			20%			0	
RCR	RCR:Room Cavity Ratio						Wall Exitance Coefficients(WEC)										
0.0																	
1.0	.101	.058	.018	.096	.055	.017	.086	.049	.016	.076	.044	.014	.067	.039	.013		
2.0	.093	.051	.016	.088	.049	.015	.080	.044	.014	.072	.040	.013	.065	.037	.012		
3.0	.085	.045	.014	.082	.044	.013	.075	.040	.012	.068	.037	.011	.062	.034	.011		
4.0	.079	.041	.012	.076	.040	.012	.070	.037	.011	.065	.035	.011	.060	.033	.010		
5.0	.074	.038	.011	.071	.037	.011	.066	.035	.010	.062	.033	.010	.058	.031	.009		
6.0	.069	.035	.010	.067	.034	.010	.063	.032	.009	.059	.031	.009	.055	.029	.009		
7.0	.065	.032	.009	.063	.032	.009	.060	.030	.009	.057	.029	.008	.053	.028	.008		
8.0	.062	.030	.009	.060	.030	.008	.057	.029	.008	.054	.027	.008	.051	.026	.008		
9.0	.059	.028	.008	.057	.028	.008	.055	.027	.008	.052	.026	.007	.050	.025	.007		
10.0	.056	.027	.007	.055	.026	.007	.052	.026	.007	.050	.025	.007	.048	.024	.007		

cc	80%			70%			50%			30%			10%			0
w	50%	30%	10%	50%	30%	10%	50%	30%	10%	50%	30%	10%	50%	30%	10%	0
fc	20%			20%			20%			20%			20%			0
RCR	RCR:Room Cavity Ratio						Ceiling Cavity Exitance Coefficients(CCEC)									
0.0	.160	.160	.160	.136	.136	.136	.093	.093	.093	.053	.053	.053	.017	.017	.017	
1.0	.140	.132	.125	.120	.113	.108	.082	.078	.074	.047	.045	.043	.015	.015	.014	
2.0	.124	.111	.100	.106	.096	.087	.073	.066	.061	.042	.039	.036	.013	.012	.012	
3.0	.111	.095	.082	.095	.082	.071	.065	.057	.050	.038	.033	.029	.012	.011	.010	
4.0	.099	.082	.068	.085	.071	.059	.059	.049	.042	.034	.029	.025	.011	.009	.008	
5.0	.090	.071	.057	.077	.062	.050	.053	.043	.035	.031	.025	.021	.010	.008	.007	
6.0	.082	.063	.049	.070	.054	.042	.049	.038	.030	.028	.022	.018	.009	.007	.006	
7.0	.075	.055	.042	.065	.048	.036	.045	.034	.026	.026	.020	.015	.008	.007	.005	
8.0	.069	.050	.036	.060	.043	.031	.041	.030	.022	.024	.018	.013	.008	.006	.004	
9.0	.064	.045	.031	.055	.039	.027	.038	.027	.019	.022	.016	.012	.007	.005	.004	
10.0	.060	.041	.028	.052	.035	.024	.036	.025	.017	.021	.015	.010	.007	.005	.003	

C Range: 0 - 360DEG
C Interval: 30.0DEG
Test Speed: HIGH
Temperature:25.3℃
Operators:zoe
Test Date:2024-12-18

Range: 0 - 180DEG
Interval: 1.0DEG
Test System:EVERFINE GO-SPEX500_V1 SYSTEM V2.00.461
Humidity:65.0%
Test Distance:3.160m [K=1.0000]
Remarks: LAMP:BXRH-30G60T0-C-83 Ra:90
LENS:PM-1117 15R
NOT DRIVER:DC 48V
30minutes warm-up

UGR(Unified Glare Rating) Table

Test:U:47.997V I:0.1341A P:6.4364W PF:1.0000 Freq:49.99Hz Lamp Flux:712.09x1 lm										
NAME: OZ48-CT-28					TYPE:			WEIGHT:		
SPEC.: 3000K					DIM.:			SERIAL No.: 2412181472		
MFR.: RISE					SUR.: 0.000346185m2			Shielding Angle:		
ceiling/cavity	0.7	0.7	0.5	0.5	0.3	0.7	0.7	0.5	0.5	0.3
walls	0.5	0.3	0.5	0.3	0.3	0.5	0.3	0.5	0.3	0.3
working plane	0.2	0.2	0.2	0.2	0.2	0.2	0.2	0.2	0.2	0.2
Room dimensions	Viewed crosswise					Viewed endwise				
x = 2H y = 2H	11.3	11.8	11.5	12.0	12.1	11.2	11.8	11.4	11.9	12.0
3H	11.2	11.7	11.4	11.8	12.0	11.1	11.6	11.3	11.8	12.0
4H	11.1	11.6	11.3	11.8	12.0	11.0	11.5	11.3	11.7	11.9
6H	11.0	11.5	11.3	11.7	11.9	10.9	11.4	11.2	11.6	11.8
8H	11.0	11.4	11.2	11.6	11.9	10.9	11.3	11.2	11.6	11.8
12H	10.9	11.3	11.2	11.6	11.9	10.8	11.3	11.1	11.5	11.8
4H 2H	11.1	11.6	11.4	11.8	12.0	11.1	11.6	11.3	11.8	12.0
3H	11.0	11.4	11.3	11.7	11.9	10.9	11.3	11.2	11.6	11.9
4H	10.9	11.3	11.2	11.6	11.9	10.8	11.2	11.1	11.5	11.8
6H	10.8	11.1	11.1	11.5	11.8	10.7	11.1	11.1	11.4	11.7
8H	10.7	11.1	11.1	11.4	11.8	10.7	11.0	11.0	11.3	11.7
12H	10.7	11.0	11.1	11.3	11.7	10.6	10.9	11.0	11.3	11.6
8H 4H	10.7	11.1	11.1	11.4	11.8	10.6	11.0	11.0	11.3	11.7
6H	10.6	10.9	11.0	11.3	11.7	10.5	10.8	11.0	11.2	11.6
8H	10.5	10.8	11.0	11.2	11.6	10.5	10.7	10.9	11.1	11.6
12H	10.5	10.7	10.9	11.1	11.6	10.4	10.6	10.9	11.1	11.5
12H 4H	10.7	11.0	11.1	11.3	11.7	10.6	10.9	11.0	11.3	11.6
6H	10.5	10.8	11.0	11.2	11.6	10.5	10.7	10.9	11.1	11.6
8H	10.5	10.7	10.9	11.1	11.6	10.4	10.6	10.9	11.1	11.5
Variations with the observer position at spacings(CIE Pub.117):										
S = 1.0H	+ 2.2 / - 6.5					+ 2.2 / - 6.2				
1.5H	+ 3.4 / - 3.5					+ 3.4 / - 3.5				
2.0H	+ 4.7 / -10.9					+ 4.5 / -11.4				

CIE Pub.117, 712.1 lm Total Lamp Luminous Flux Correct (8log(F/F0) = -1.2)
Area: 0.000346185 m2

C Range: 0 - 360DEG
C Interval: 30.0DEG
Test Speed: HIGH
Temperature:25.3℃
Operators:zoe
Test Date:2024-12-18

Range: 0 - 180DEG
Interval: 1.0DEG
Test System:EVERFINE GO-SPEX500_V1 SYSTEM V2.00.461
Humidity:65.0%
Test Distance:3.160m [K=1.0000]
Remarks: LAMP:BXRH-30G60T0-C-83 Ra:90
LENS:PM-1117 15R
NOT DRIVER:DC 48V
30minutes warm-up

UTILIZATION FACTORS TABLE

Test:U:47.997V I:0.1341A P:6.4364W PF:1.0000 Freq:49.99Hz Lamp Flux:712.09x1 lm		
NAME: OZ48-CT-28	TYPE:	WEIGHT:
SPEC.: 3000K	DIM.:	SERIAL No.: 2412181472
MFR.: RISE	SUR.: 0.000346185m2	Shielding Angle:

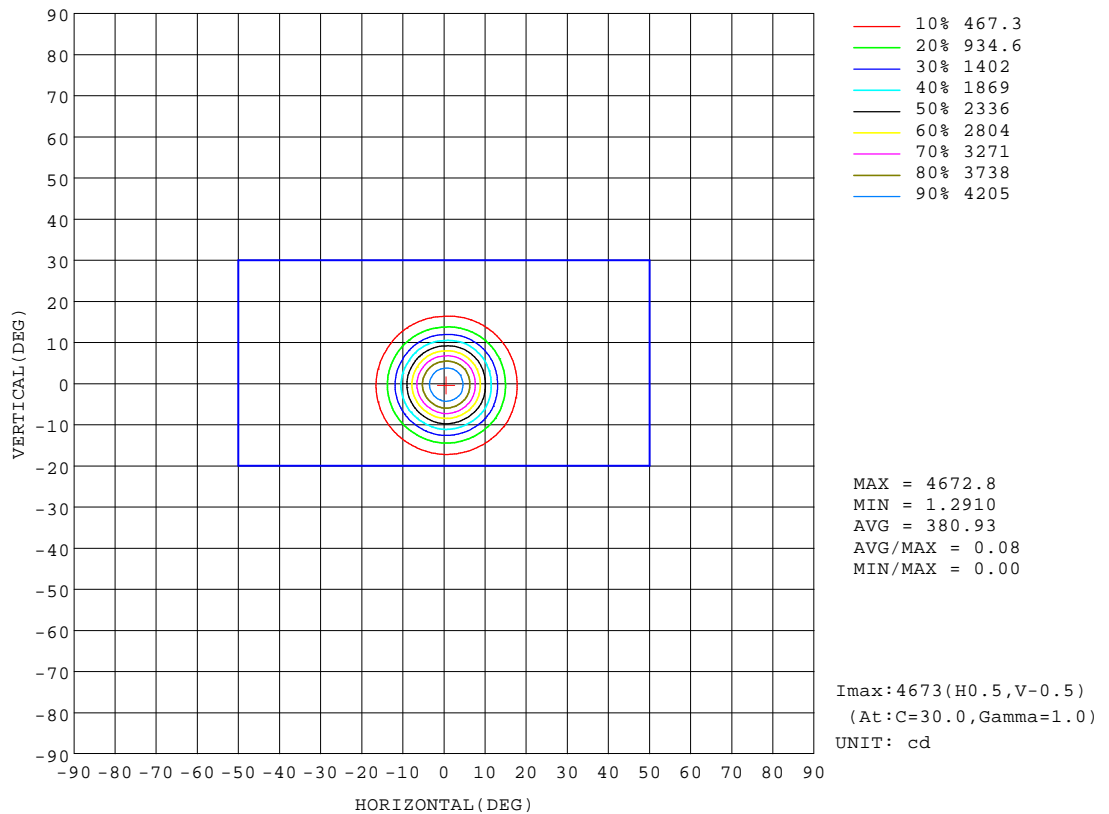
REFLECTANCE										
Ceiling	0.8	0.8	0.8	0.7	0.7	0.7	0.5	0.5	0.5	0
Walls	0.7	0.5	0.3	0.7	0.5	0.3	0.7	0.5	0.3	0
Working plane	0.2	0.2	0.2	0.2	0.2	0.2	0.2	0.2	0.2	0
ROOM INDEX	UTILIZATION FACTORS(PERCENT) $k(RI) \times RCR = 5$									
k = 0.60	76	71	69	76	71	69	75	71	68	66
0.80	82	78	75	81	77	75	81	77	74	72
1.00	85	81	78	85	81	78	83	80	78	75
1.25	88	84	82	87	84	81	86	83	81	77
1.50	90	87	84	89	86	84	87	85	83	79
2.00	92	89	86	91	88	86	89	86	85	80
2.50	93	90	88	92	89	87	89	87	86	81
3.00	94	92	90	93	91	89	90	88	87	82
4.00	96	94	92	94	93	91	91	90	89	83
5.00	97	95	94	95	94	93	92	91	90	84
ROOM INDEX	UF(total)									Direct
According to DIN EN 13032-2 2004			Suspended					SHRNOM = 1.25		

C Range: 0 - 360DEG
C Interval: 30.0DEG
Test Speed: HIGH
Temperature:25.3℃
Operators:zoe
Test Date:2024-12-18

Range: 0 - 180DEG
Interval: 1.0DEG
Test System:EVERFINE GO-SPEX500_V1 SYSTEM V2.00.461
Humidity:65.0%
Test Distance:3.160m [K=1.0000]
Remarks: LAMP:BXRH-30G60T0-C-83 Ra:90
LENS:PM-1117 15R
NOT DRIVER:DC 48V
30minutes warm-up

ISOCANDELA DIAGRAM

Test:U:47.997V I:0.1341A P:6.4364W PF:1.0000 Freq:49.99Hz Lamp Flux:712.09x1 lm		
NAME: OZ48-CT-28	TYPE:	WEIGHT:
SPEC.: 3000K	DIM.:	SERIAL No.: 2412181472
MFR.: RISE	SUR.: 0.000346185m2	Shielding Angle:

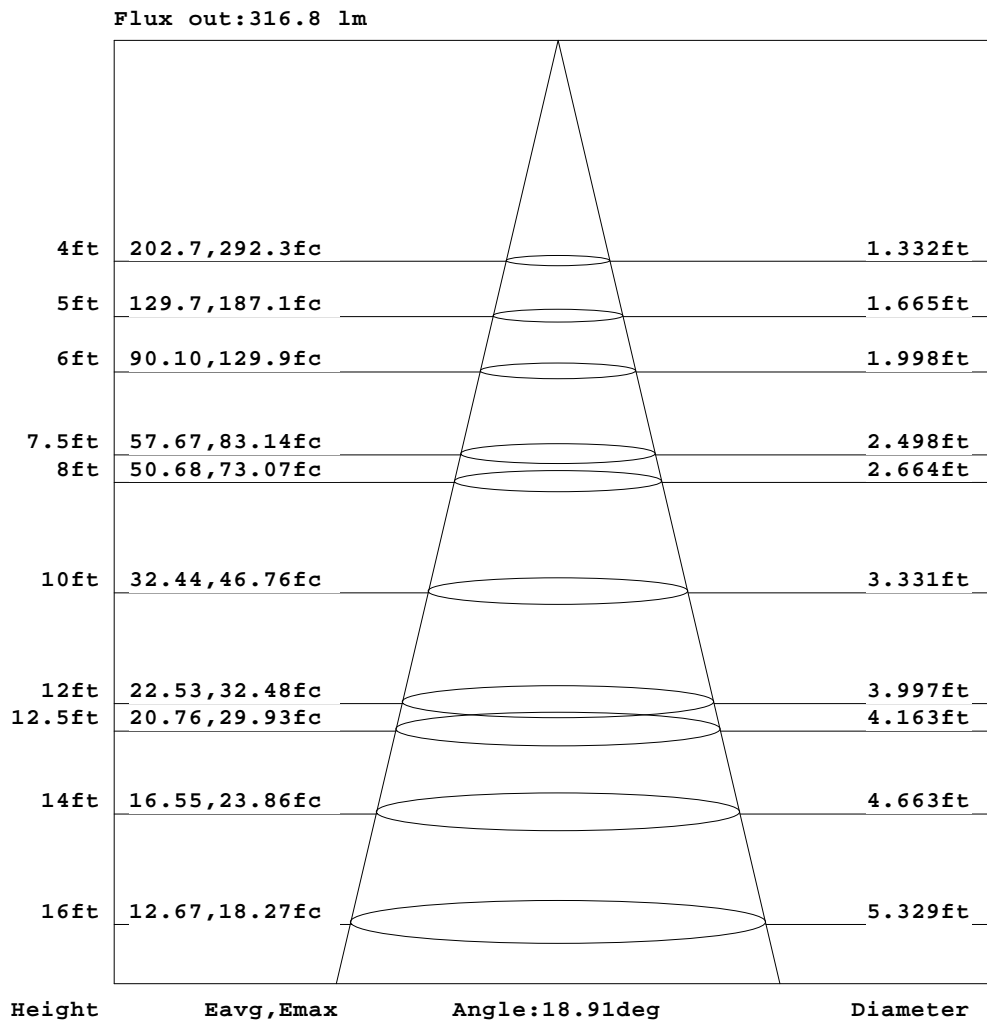


C Range: 0 - 360DEG
C Interval: 30.0DEG
Test Speed: HIGH
Temperature:25.3℃
Operators:zoe
Test Date:2024-12-18

Range: 0 - 180DEG
Interval: 1.0DEG
Test System:EVERFINE GO-SPEX500_V1 SYSTEM V2.00.461
Humidity:65.0%
Test Distance:3.160m [K=1.0000]
Remarks: LAMP:BXRH-30G60T0-C-83 Ra:90
LENS:PM-1117 15R
NOT DRIVER:DC 48V
30minutes warm-up

AAI Figure

Test:U:47.997V I:0.1341A P:6.4364W PF:1.0000 Freq:49.99Hz Lamp Flux:712.09x1 lm		
NAME: OZ48-CT-28	TYPE:	WEIGHT:
SPEC.: 3000K	DIM.:	SERIAL No.: 2412181472
MFR.: RISE	SUR.: 0.000346185m2	Shielding Angle:



Note:The Curves indicate the illuminated area and the average illumination when the luminaire is at different distance.

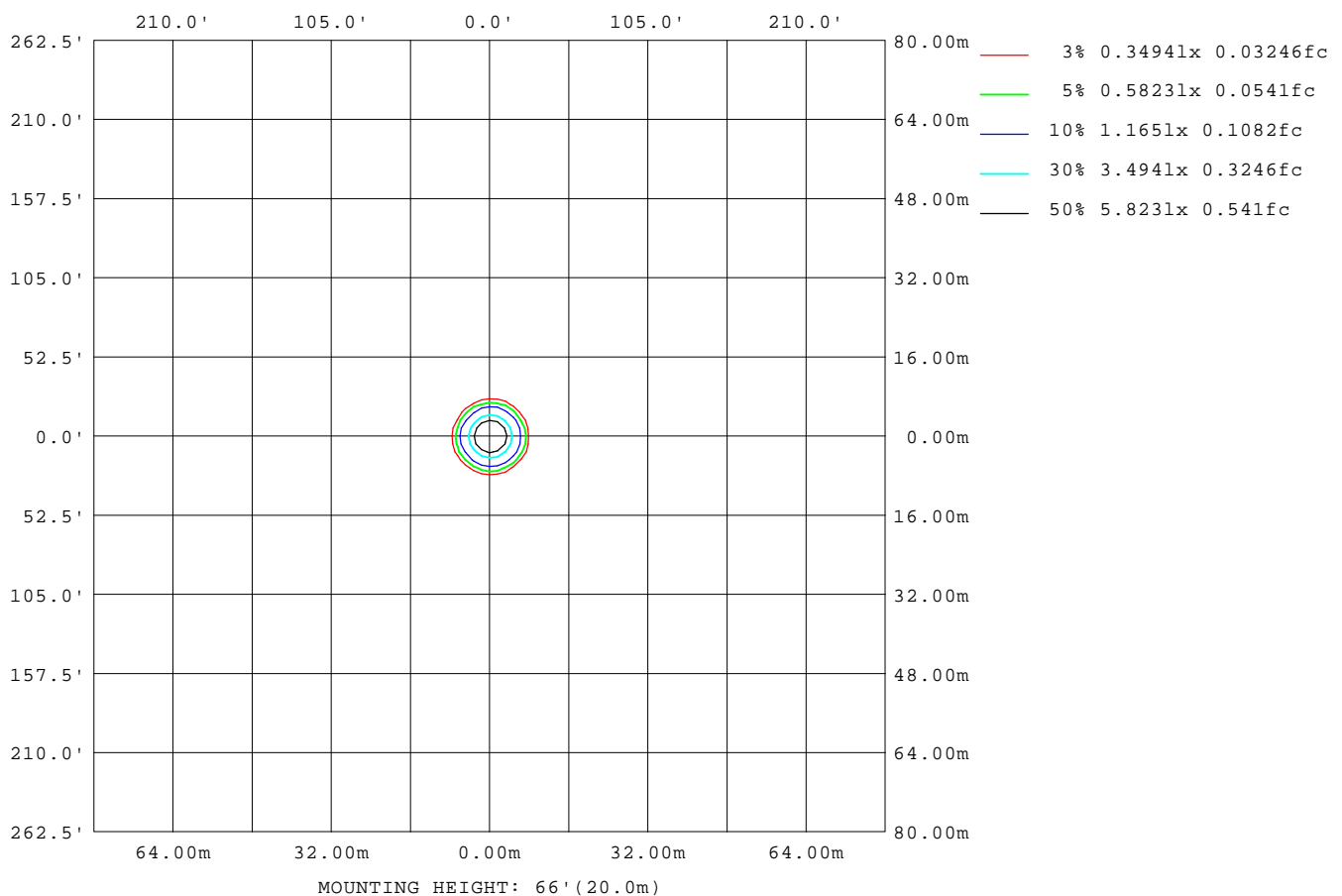
C Range: 0 - 360DEG
C Interval: 30.0DEG
Test Speed: HIGH
Temperature:25.3℃
Operators:zoe
Test Date:2024-12-18

Range: 0 - 180DEG
Interval: 1.0DEG
Test System:EVERFINE GO-SPEX500_V1 SYSTEM V2.00.461
Humidity:65.0%
Test Distance:3.160m [K=1.0000]
Remarks: LAMP:BXRH-30G60T0-C-83 Ra:90
LENS:PM-1117 15R
NOT DRIVER:DC 48V
30minutes warm-up



ISOLUX DIAGRAM

Test:U:47.997V I:0.1341A P:6.4364W PF:1.0000 Freq:49.99Hz Lamp Flux:712.09x1 lm		
NAME: OZ48-CT-28	TYPE:	WEIGHT:
SPEC.: 3000K	DIM.:	SERIAL No.: 2412181472
MFR.: RISE	SUR.: 0.000346185m2	Shielding Angle:



C Range: 0 - 360DEG
C Interval: 30.0DEG
Test Speed: HIGH
Temperature: 25.3 °C
Operators: zoe
Test Date: 2024-12-18

Range: 0 - 180DEG
Interval: 1.0DEG
Test System: EVERFINE GO-SPEX500_V1 SYSTEM V2.00.461
Humidity: 65.0%
Test Distance: 3.160m [K=1.0000]
Remarks: LAMP: BXRH-30G60T0-C-83 Ra: 90
LENS: PM-1117 15R
NOT DRIVER: DC 48V
30minutes warm-up

LED Avg.L Report

Test:U:47.997V I:0.1341A P:6.4364W PF:1.0000 Freq:49.99Hz Lamp Flux:712.09x1 lm		
NAME: OZ48-CT-28	TYPE:	WEIGHT:
SPEC.: 3000K	DIM.:	SERIAL No.: 2412181472
MFR.: RISE	SUR.: 0.000346185m2	Shielding Angle:

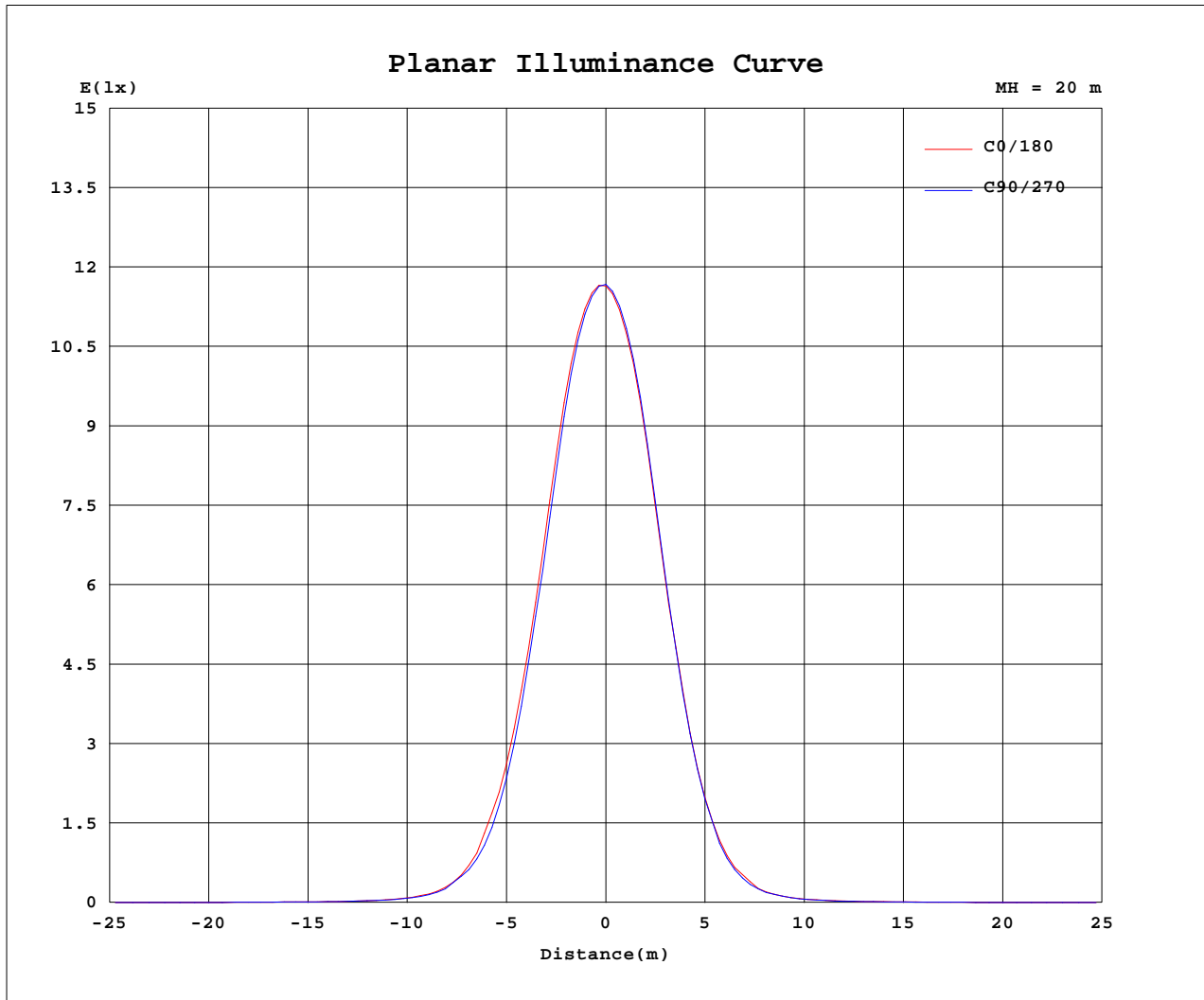
AvgL	cd/m2
L_0~180(65)av	757
L_0~180(75)av	321
L_0~180(85)av	618
L_90~270(65)av	749
L_90~270(75)av	277
L_90~270(85)av	612
L_45(65)av	734
L_45(75)av	235
L_45(85)av	253

Standard: GB/T 29293-2012

C Range: 0 - 360DEG
C Interval: 30.0DEG
Test Speed: HIGH
Temperature:25.3℃
Operators:zoe
Test Date:2024-12-18

Range: 0 - 180DEG
Interval: 1.0DEG
Test System:EVERFINE GO-SPEX500_V1 SYSTEM V2.00.461
Humidity:65.0%
Test Distance:3.160m [K=1.0000]
Remarks: LAMP:BXRH-30G60T0-C-83 Ra:90
LENS:PM-1117 15R
NOT DRIVER:DC 48V
30minutes warm-up

Planar Illuminance Curve



C Range: 0 - 360DEG
 C Interval: 30.0DEG
 Test Speed: HIGH
 Temperature: 25.3 °C
 Operators: zoe
 Test Date: 2024-12-18

Range: 0 - 180DEG
 Interval: 1.0DEG
 Test System: EVERFINE GO-SPEX500_V1 SYSTEM V2.00.461
 Humidity: 65.0%
 Test Distance: 3.160m [K=1.0000]
 Remarks: LAMP: BXRH-30G60T0-C-83 Ra:90
 LENS: PM-1117 15R
 NOT DRIVER: DC 48V
 30minutes warm-up



LUMINOUS DISTRIBUTION INTENSITY DATA

Test:U:47.997V I:0.1341A P:6.4364W PF:1.0000 Freq:49.99Hz Lamp Flux:712.09x1 lm		
NAME: OZ48-CT-28	TYPE:	WEIGHT:
SPEC.: 3000K	DIM.:	SERIAL No.: 2412181472
MFR.: RISE	SUR.: 0.000346185m2	Shielding Angle:

Table--1

UNIT: cd

C(DEG) (DEG)	0	30	60	90	120	150	180	210	240	270	300	330						
0	4665	4665	4665	4665	4665	4665	4665	4665	4665	4665	4665	4665						
5	4123	4163	4102	4033	3922	3852	3829	3779	3809	3856	3980	4083						
10	2378	2419	2328	2266	2100	2061	2022	1915	1961	2006	2205	2317						
15	929	955	874	820	774	717	688	666	635	684	771	864						
20	253	284	239	241	198	205	191	158	161	167	214	227						
25	71.2	72.3	72.6	64.4	57.6	55.0	51.9	48.7	48.4	49.2	55.6	66.0						
30	27.1	28.1	27.1	25.8	23.6	22.9	22.3	21.1	21.7	20.7	22.5	24.2						
35	14.2	14.7	14.6	13.7	13.1	12.7	12.6	11.8	11.6	11.5	12.1	13.0						
40	9.49	9.88	9.74	9.47	9.25	8.89	8.49	7.79	7.79	7.98	8.28	8.79						
45	4.99	5.29	5.06	4.88	4.52	4.18	4.05	3.79	3.98	4.31	4.59	4.79						
50	2.58	2.70	2.67	2.65	2.64	2.51	2.40	2.36	2.43	2.52	2.59	2.56						
55	1.64	1.76	1.76	1.71	1.67	1.59	1.53	1.50	1.51	1.56	1.62	1.61						
60	0.72	0.78	0.79	0.82	0.84	0.77	0.65	0.63	0.64	0.66	0.68	0.68						
65	0.11	0.11	0.11	0.11	0.10	0.11	0.11	0.10	0.11	0.11	0.11	0.11						
70	0.06	0.05	0.05	0.05	0.05	0.05	0.05	0.05	0.05	0.05	0.05	0.05						
75	0.03	0.02	0.02	0.02	0.02	0.02	0.03	0.02	0.02	0.03	0.02	0.02						
80	0.02	0.01	0.01	0.02	0.01	0.01	0.02	0.01	0.01	0.02	0.01	0.01						
85	0.02	0.01	0.01	0.02	0.01	0.01	0.02	0.01	0.01	0.02	0.01	0.01						
90	0.00	0.00	0.00	0.00	0.00	0.00	0.00	0.00	0.00	0.00	0.00	0.00						
95	0.00	0.00	0.00	0.00	0.00	0.00	0.00	0.00	0.00	0.00	0.00	0.00						
100	0.00	0.00	0.00	0.00	0.00	0.00	0.00	0.00	0.00	0.00	0.00	0.00						
105	0.00	0.00	0.00	0.00	0.00	0.00	0.00	0.00	0.00	0.00	0.00	0.00						
110	0.00	0.00	0.00	0.00	0.00	0.00	0.00	0.00	0.00	0.00	0.00	0.00						
115	0.00	0.00	0.00	0.00	0.00	0.00	0.00	0.00	0.00	0.00	0.00	0.00						
120	0.00	0.00	0.00	0.00	0.00	0.00	0.00	0.00	0.00	0.00	0.00	0.00						
125	0.00	0.00	0.00	0.00	0.00	0.00	0.00	0.00	0.00	0.00	0.00	0.00						
130	0.00	0.00	0.00	0.00	0.00	0.00	0.00	0.00	0.00	0.00	0.00	0.00						
135	0.00	0.00	0.00	0.00	0.00	0.00	0.00	0.00	0.00	0.00	0.00	0.00						
140	0.00	0.00	0.00	0.00	0.00	0.00	0.00	0.00	0.00	0.00	0.00	0.00						
145	0.00	0.00	0.00	0.00	0.00	0.00	0.00	0.00	0.00	0.00	0.00	0.00						
150	0.00	0.00	0.00	0.00	0.00	0.00	0.00	0.00	0.00	0.00	0.00	0.00						
155	0.00	0.00	0.00	0.00	0.00	0.00	0.00	0.00	0.00	0.00	0.00	0.00						
160	0.00	0.00	0.00	0.00	0.00	0.00	0.00	0.00	0.00	0.00	0.00	0.00						
165	0.00	0.00	0.00	0.00	0.00	0.00	0.00	0.00	0.00	0.00	0.00	0.00						
170	0.00	0.00	0.00	0.00	0.00	0.00	0.00	0.00	0.00	0.00	0.00	0.00						
175	0.00	0.00	0.00	0.00	0.00	0.00	0.00	0.00	0.00	0.00	0.00	0.00						
180	0.00	0.00	0.00	0.00	0.00	0.00	0.00	0.00	0.00	0.00	0.00	0.00						

C Range: 0 - 360DEG
C Interval: 30.0DEG
Test Speed: HIGH
Temperature:25.3℃
Operators:zoe
Test Date:2024-12-18

Range: 0 - 180DEG
Interval: 1.0DEG
Test System:EVERFINE GO-SPEX500_V1 SYSTEM V2.00.461
Humidity:65.0%
Test Distance:3.160m [K=1.0000]
Remarks: LAMP:BXRH-30G60T0-C-83 Ra:90
LENS:PM-1117 15R
NOT DRIVER:DC 48V
30minutes warm-up